

# Early Heart Attack Care

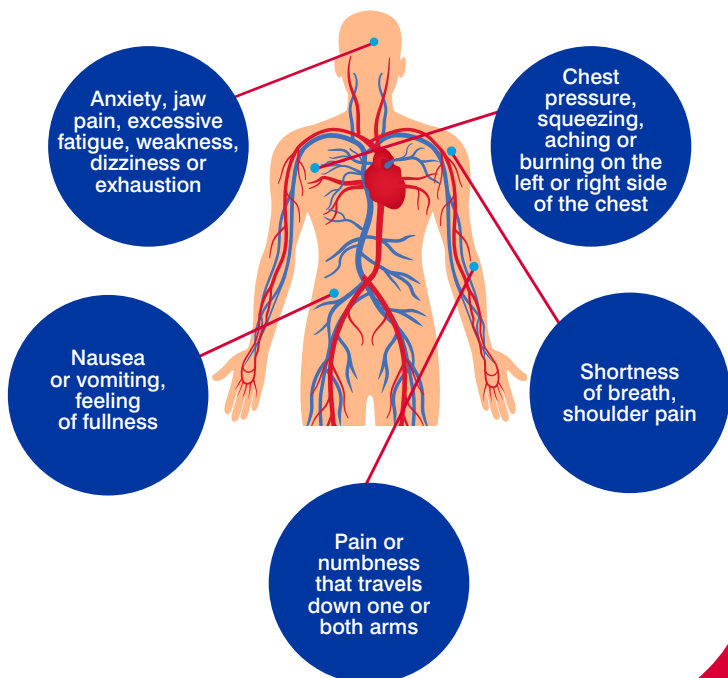
Knowing the early signs of a heart attack and acting quickly can save your life.

## DID YOU KNOW?

Early symptoms occur in 50% of heart attack patients. Early Heart Attack Care (EHAC) is a program designed to help you recognize these signs as early as weeks before the actual attack. If you think you or someone around you may be having a heart attack, call 9-1-1 immediately. We want to treat you before permanent heart damage occurs.

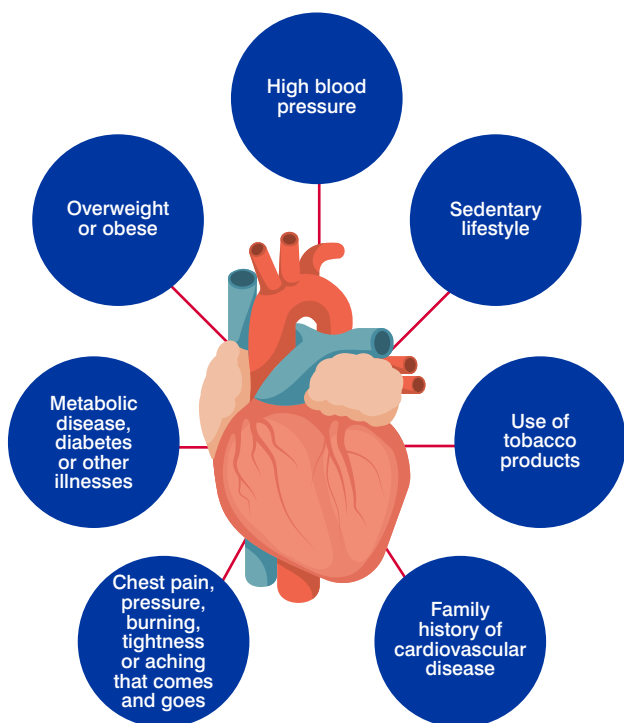
**Survive. Don't drive. CALL 9-1-1**

## GENERAL SIGNS AND SYMPTOMS OF A HEART ATTACK



TALLAHASSEE  
MEMORIAL  
HEALTHCARE

## GENERAL HEART ATTACK RISK FACTORS



## ADDITIONAL RISK FACTORS FOR WOMEN



## FAST FACTS

Most heart damage occurs within the first two hours of a heart attack.

About 750,000 people in the U.S. have heart attacks each year. Of those, about 116,000 die.

To learn more about early signs of heart attack, scan the QR code or visit [TMH.ORG/HeartResources](https://www.tmh.org/HeartResources).

